

AD 2. AERODROMES

FYWB AD 2.1 AERODROME LOCATION INDICATOR AND NAME

FYWB - Walvis Bay Airport

FYWB AD 2.2 AERODROME GEOGRAPHICAL AND ADMINISTRATIVE DATA

1.	<i>ARP co-ordinates and site at AD</i>	225848S 0143843E
2.	<i>Direction and distance from (city)</i>	East, 8 NM from Walvis Bay
3.	<i>Elevation/reference temperature</i>	299 FT/91 M
4.	<i>Geoid undulation at AD ELEV PSN</i>	96.8 FT (29.5M)
5.	<i>MAG VAR/annual change</i>	15° W(2004)
6.	<i>AD administration, address, telephone, telefax, telex, AFS</i>	Namibia Airports Company Limited The Airport Manager PO Box 2307 Walvis Bay AD Tel: +264 64 271100 Telefax: +264 64 200164 APM Tel: +264 64 271101 Fax: +264 64 200164 Email : TjihukununaD@airports.com.na ATC Tel: +264 64 702690 Fax: +264 64 702699 AFS: FYWB DYX
7.	<i>Types of traffic permitted (IFR/VFR)</i>	IFR/VFR
8.	<i>Remarks</i>	Public aerodrome Designated port of entry/exit

FYWB AD 2.3 OPERATIONAL HOURS

1.	<i>AD administration</i>	Summer: MON – SUN 0600 – 1500 Winter: MON – SUN 0700 – 1600
2.	<i>Customs and immigration</i>	O/R Customs : +264 64 2086000 Immigration : +264 64 203232/ +264 81 4216198/ +264 81 2495556
3.	<i>Health and sanitation</i>	Nil facilities
4.	<i>AIS briefing office</i>	Nil facilities

5.	<i>ATS reporting office (ARO)</i>	Nil facilities
6.	<i>MET briefing office</i>	0600 – 1400
7.	<i>ATS</i>	As per NOTAM
8.	<i>Fuelling</i>	Summer: MON – FRI 0600 – 1500 SAT, SUN and Public HOL : Call out except scheduled flight Winter: MON – FRI 0700 – 1600 SAT, SUN and Public HOL : Call out except scheduled flight
9.	<i>Handling</i>	Approved ground handler unscheduled passenger and cargo flights: Walvis Bay Airport Services (WBAS) Tel. +264 64 2012326 / 2012911 / 204878 Mobile +264 811284283, +264811282437 PN
10.	<i>Security</i>	24 HRS
11.	<i>De-icing</i>	Nil facilities
12.	<i>Remarks</i>	Except in the case of emergency or with prior permission no ACFT may take off or land outside AD OPR HR.

FYWB AD 2.4 HANDLING SERVICES AND FACILITIES

1.	<i>Cargo-handling facilities</i>	Walvis Bay Airport Services (WBAS) Hydraulic staircases, forklift 3 ton, air starter unit, 5 ton high loader, tractor, 5 ton scale, aircraft pallet repair shop, baggage trolleys cargo trailers, GPU, toilet services, potable water supply
2.	<i>Fuel/oil types</i>	AVGAS + JET
3.	<i>Fuelling facilities/capacity</i>	Southern Energy Company P.O Box 1228 Walvis Bay Tel/Fax: +264 64 203984 Refueller: Harry Green and Creseltius Murangi Operator's Office: +264 64 207623 Standby cellphone: +264 855 442 001 Controlling Office Tel: +264 64 203951 / 203984 (office hours) +264 81 6978652 (After hours) Fax: +264 64 203984 Cell: +264 81 149 0114 Email: Sharonb@sec.com.na
4.	<i>De-icing facilities</i>	Nil facilities
5.	<i>Hangar space for visiting aircraft</i>	One big hangar is available (leased to WFS / WBAS)
6.	<i>Repair facilities for visiting aircraft</i>	Nil facilities
7.	<i>Remarks</i>	Nil

FYWB AD 2.5 PASSENGER FACILITIES

1.	<i>Hotels</i>	In town
2.	<i>Restaurants</i>	Kiosk at AD and restaurants in town
3.	<i>Transportation</i>	Car rental
4.	<i>Medical facilities</i>	First aid at AD and hospital in town
5.	<i>Bank and post office</i>	In town
6.	<i>Tourist office</i>	Nil facility
7.	<i>Remarks</i>	Nil

FYWB AD 2.6 RESCUE AND FIRE FIGHTING SERVICES

1.	<i>AD category for fire fighting</i>	CAT 6
2.	<i>Rescue equipment</i>	3 Vehicles R2 - 11 000 Litres water / 1320 Litres foam / 250 kg DCP R3 - 11 000 Litres water / 1320 Litres foam / 250 kg DCP R4 - 11 000 Litres water / 1320 Litres foam / 250 kg DCP
3.	<i>Capability for removal of disabled aircraft</i>	Nil facility
4.	<i>Remarks</i>	Fire and Rescue Services HOD Summer : MON – FRI 0600 – 1500 UTC daily SAT – SUN 0600 – 1500 UTC daily Winter : MON – FRI 0700 – 1600 UTC daily SAT – SUN 0700 – 1600 UTC daily Public holidays same as weekends

FYWB AD 2.7 SEASONAL AVAILABILITY - CLEARING

Nil facilities available

FYWB AD 2.8 APRONS, TAXIWAYS AND CHECK LOCATIONS DATA

1.	<i>Apron surface and strength</i>	Surface: Concrete and Asphalt Strength: Nil info available
2.	<i>Taxiway width, surface and strength</i>	Width: 15 M Surface: Asphalt Strength: Nil info available
3.	<i>ACL location and elevation</i>	Nil info available
4.	<i>VOR/INS checkpoints</i>	Nil facilities
5.	<i>Remarks</i>	Nil

FYWB AD 2.9 SURFACE MOVEMENT GUIDANCE AND CONTROL SYSTEM AND MARKINGS

1.	<i>Use of aircraft stand ID signs, TWY guide lines and visual docking/ parking guidance system of aircraft stands</i>	Nil facilities
2.	<i>RWY and TWY markings and LGT</i>	RWY: THR, designators, centre line TWY: Holding positions at all RWY/TWY intersections, centre line markings
3.	<i>Stop bars</i>	Nil facilities
4.	<i>Remarks</i>	Nil

FYWB AD 2.10 AERODROME OBSTACLES

<i>Area 2</i>					
<i>OBST ID/ Designation</i>	<i>OBST Type</i>	<i>OBST position</i>	<i>ELEV/HGT(FT)</i>	<i>Markings / Type, Colour</i>	<i>Remarks</i>
a	b	c	d	e	f
Rooi Res	Reservoir	225850.47S 0143937.35E	508.73/Nil INFO AVBL	Nil INFO AVBL	Nil
NW MAST	Mast	225818.80S 0143841.18E	332.4/Nil INFO AVBL	R W/R LGT	Nil
Hanger	Hanger	225839.08S 0143832.69E	310.3/Nil INFO AVBL	Nil	Nil
Cell TWR	Mast	225821.38S 0143837.91E	340.7/Nil INFO AVBL	R W/R LGT	Nil
CT	Control TWR	225837.16S 0143841.08E	302.6/Nil INFO AVBL	R LGT	Nil
LIT	Mast	225851.98S 0143845.37E	302.6/Nil INFO AVBL	Nil	Nil
FIRE	Mast	225835.23S 0143844.88E	321.6/Nil INFO AVBL	R W/NIL	Nil
BUNK	Mast	225831.92S 0143807.27E	292.06/Nil INFO AVBL	R W/Nil	Nil
VOR WBV	NAV AID	225855.59S 0143840.48E	288.2/27.2	R W/ R LGT	Nil
MIL E	Mast	225852.31S 0143920.76E	397.9/100.3	R LGT	Nil
MIL W	Mast	225850.36S 0143922.63E	398.7/99.9	R LGT	Nil
TELECOM MAST	MAST	230317.00S 0143729.00E	533FT AMSL	DAY/NIGHT	NIL

<i>Area 3</i>					
<i>OBST ID/ Designation</i>	<i>OBST Type</i>	<i>OBST position</i>	<i>ELEV/HGT</i>	<i>Markings / Type, Colour</i>	<i>Remarks</i>
Nil					

FYWB AD 2.11 METEOROLOGICAL INFORMATION PROVIDED

1.	<i>Associated Met office</i>	Windhoek
2.	<i>Hours of service MET office outside hours</i>	0600 – 1500
3.	<i>Office responsible for TAF preparation Periods of validity</i>	Windhoek 6 HR
4.	<i>Type of landing forecast Interval of issuance</i>	TREND Nil
5.	<i>Briefing/consultation provided</i>	P, T
6.	<i>Flight documentation Language(s) used</i>	PL, TB English
7.	<i>Charts and other information available for briefing or consultation</i>	S3, U85, U7, U5, U2, P5
8.	<i>Supplementary equipment available for providing information</i>	Nil supplementary equipment
9.	<i>ATS units provided with information</i>	Windhoek FIC
10.	<i>Additional information (limitation of service, etc.)</i>	Daily at 10h00 UTC weather balloon will be launched. GND-FL250

Mean daily maximum and minimum temperatures (°C) for each month of the year												
	JAN	FEB	MAR	APR	MAY	JUN	JUL	AUG	SEP	OCT	NOV	DEC
Max	23.2	23.1	24	24	23.6	23	21.6	19.8	19.3	19.9	20.9	22
Min	15.6	16.5	16	13.3	11.6	10.5	9.2	9.1	10	11.4	13	14.6
Mean pressure for each month of the year at approximately the times of MAX and MIN temperatures in hPa												
Max	33.0	29.9	35.5	38.4	38.8	37.0	35.4	38.0	37.0	27.6	32.0	27.0
Min	10.5	10.5	8.5	5.3	3.0	0.5	2.2	2.2	3.0	4.0	7.5	9.2
Relative and absolute humidity at approximately the times of MAX (a) and MNM (b) temperatures												
Rel(a)	72	69	71	64	58	56	57	65	68	68	69	56
% (b)	90	89	91	92	84	79	82	89	91	91	88	74

FYWB AD 2.12 RUNWAY PHYSICAL CHARACTERISTICS

<i>Designations RWY R</i>	<i>TRUE BRG</i>	<i>Dimensions of RWY (M)</i>	<i>Strength (LCN) and surface of RWY and SWY</i>	<i>THR coordinates RWY end coordinates THR geoid undulation</i>	<i>THR Elevation and Highest Elevation of TDZ of Precision APP RWY</i>
1	2	3	4	5	6
09	071.97°	2134 x 30	Asphalt	S225858.45 E0143807.81 225858.51S 0143807.58E GUND 96.8 FT	248 FT
27	251.97°	2134 x 30	Asphalt	S225837.12 E0143918.62 225837.05S 0143918.82E GUND 96.8 FT	299 FT

<i>Slope of RWY- SWY</i>	<i>SWY Dimensions (M)</i>	<i>CWY Dimensions (M)</i>	<i>Strip Dimensions (M)</i>	<i>OFZ</i>	<i>Remarks</i>
7	8	9	10	11	12
Nil info	Nil info	Nil info	Nil info	Nil info	Nil
Nil info	Nil info	Nil info	Nil info	Nil info	Nil

FYWB AD 2.13 DECLARED DISTANCES

<i>RWY Designator</i>	<i>TORA (M)</i>	<i>TODA(M)</i>	<i>ASDA (M)</i>	<i>LDA (M)</i>	<i>Remarks</i>
1	2	3	4	5	6
09	2134	2134	2134	2134	Nil
27	2134	2134	2134	2134	Nil

FYWB AD 2.14 APPROACH AND RUNWAY LIGHTING

<i>RWY Designator</i>	<i>APCH LGT type LEN INTST</i>	<i>THR LGT colour WBAR</i>	<i>VASIS (MEHT) PAPI</i>	<i>TDZ, LGT, LEN</i>	<i>RWY Centre line LGT length, spacing, colour, INTST</i>
1	2	3	4	5	6
09L	900 m	Green	PAPI, Left/ 3° (30FT)	NIL	3390 m, 15m, white middle and red end
27R	CAT111 900m LIH	Green	PAPI, Left/ 3° (69FT)	875 m	3390 m, 15m, white middle and red end
09R	Simple APCH 900 m	Green	PAPI, Right/ 3,75° (28FT)	NIL	3390 m, 15m, white middle and red end
27L	900 m	Green	PAPI, Right/ 2,75° (40FT)	875 m	3390 m, 15m, white middle and red end

<i>RWY edge LGT LEN spacing colour INTST</i>	<i>RWY End LGT colour WBAR</i>	<i>SWY LGT LEN (M) colour</i>	<i>Remarks</i>
7	8	9	10
3360 m, 60m, white, LIH	Red	40 m Yellow and red	NIL
3360 m, 60m, white, LIH	Red	40 m Yellow and red	Landing can only be done 1765m from APCH RWY 27
3360 m, 60m, white, LIH	Red	40 m Yellow and red	NIL
3360 m, 60m, white, LIH	Red	40 m Yellow and red	RWY landing can only be usable 1765m from APCH RWY 27

FYWB AD 2.15 OTHER LIGHTING, SECONDARY POWER SUPPLY

1.	<i>ABN/IBN location, characteristics and hours of operation</i>	ABN - FLG F/W IBN
2.	<i>Anemometer location and LGT</i>	Due South of TWR Anemometer - LGT
3.	<i>TWY edge and centre line lighting</i>	TWY edge lights are only available at intersection "C"
4.	<i>Secondary power supply/switch-over time</i>	Standby Power supply available Switch over time : 7 Seconds
5.	<i>Remarks</i>	2X 400 KVA Cummins power generator sets

FYWB AD 2.16 HELICOPTER LANDING AREA

Nil facilities available.

FYWB AD 2.17 ATS AIRSPACE

1.	<i>Designation and lateral limits</i>	Walvis Bay CTR Circle radius 10 NM centred at 225856S 0143840E (VOR)
2.	<i>Vertical limits</i>	GND / 3 500 FT ALT
3.	<i>Airspace classification</i>	C
4.	<i>ATS unit call sign</i> <i>Language(s)</i>	Walvis Bay Tower English
5.	<i>Transition altitude</i>	4 000 FT
6.	<i>Remarks</i>	All traffic operating below the FYWB TMA "A" and TMA "B" must contact FYWB APP on FREQ 122.5 MHz.

FYWB AD 2.18 ATS COMMUNICATION FACILITIES

<i>Service designation</i>	<i>Call sign</i>	<i>Frequency</i>	<i>Hours of operation</i>	<i>Remarks</i>
1	2	3	4	5
Tower/APP	Walvis Bay Tower	122.5 MHz	MON-FRI: 0530-1730 SAT: 0830-1430 SUN: 0700-1500 Or as per NOTAM	Combined service for Tower and Approach
ATIS	Walvis Bay ATIS	127.0 MHz	H24	Fully operational 50NM radius around airport on this FREQ127.0MHz or TEL 0813323509

FYWB AD 2.19 RADIO NAVIGATION AND LANDING AIDS

<i>Type of aid, CAT of ILS/MLS (for VOR/ILS/ MLS give VAR)</i>	<i>ID</i>	<i>Frequency</i>	<i>Hours of Operation</i>	<i>Site of transmitting antenna co-ordinates</i>	<i>Elevation of DME transmitting antenna</i>	<i>Remarks</i>
1	2	3	4	5	6	7
VOR/DME	WBV	113,6 MHZ	HO	225856S 0143840E	299.2 FT	Nil

FYWB AD 2.20 LOCAL TRAFFIC REGULATIONS

1. **Aerodrome regulations**
 - 1.1 Circuit Altitude :
 - a) Turbine-powered aircraft 2000 FT ALT
 - b) Reciprocating engine powered aircraft
1500FT ALT
 - 1.2 All pilots operating at Walvis Bay aerodrome must wear a lime green reflective jacket depicting their airlines concerned on the rear of the jacket for safety reasons as well as easy identification
2. **Taxiing to and from stands**
Nil procedures.
3. **Parking area for small aircraft (general aviation)**
Nil procedures.
4. **Parking area for helicopters**
On apron.
Apron - Taxiing during winter conditions
Nil procedures
5. **Taxiing - Limitations**
Nil limits.
6. **School and training flights - Technical test flights - Use of runways**
Nil facilities.
7. **Helicopter traffic - Limitation**
Nil limits.
8. **Removal of disabled aircraft from runways**
Nil facilities.

FYWB AD 2.21 NOISE ABATEMENT PROCEDURES

Nil procedures.

FYWB AD 2.22 FLIGHT PROCEDURES

Radio Communication Failure

- a) Aircraft to join overhead the Aerodrome at 2000 feet AGL
- b) Observe and join the Aerodrome TFC
- c) Make all turns to the left whenever possible
- d) Land as soon as possible and report to the ATC

FYWB AD 2.23 ADDITIONAL INFORMATION

Model flying activities taking place on weekends 5NM southwest of FYWB at position S230237 E0143515.

Paragliding activities in dunes near Langstrand throughout the year.

FYWB AD 2.24 CHARTS RELATED TO WALVIS BAY

The following charts are produced for Walvis Bay Aerodrome

ICAO Charts		
No	Chart Type	Page No
1	Aerodrome Chart - ICAO	FYWB AD 2-13
2	Instrument Approach Chart - ICAO VOR/DME RWY 09	FYWB AD 2-15
3	Instrument Approach Chart - ICAO VOR/DME RWY 27	FYWB AD 2-17

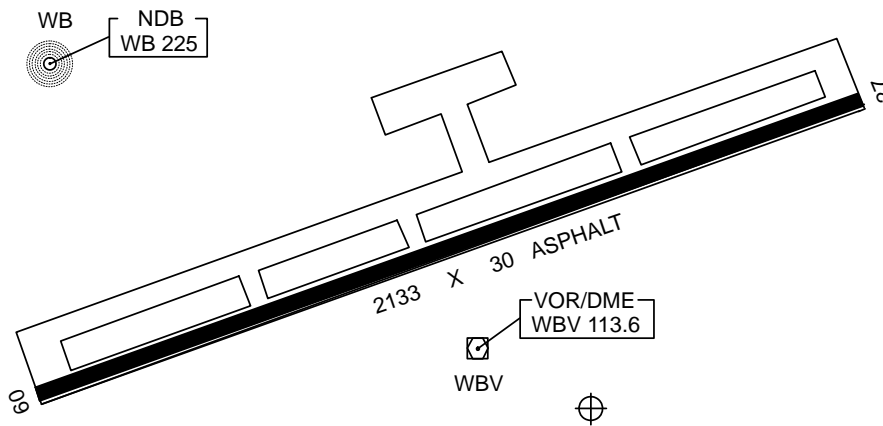
INTENTIONALLY LEFT BLANK

AERODROME CHART - ICAO 22°59'00" S 014°39'00" E ELEV - 312 ft TWR - 122.5 **WALVIS BAY**
WALVIS BAY INTL

RWY	DIRECTION	THR	BEARING	STRENGTH
09	070° GEO 085° MAG			
27	250° GEO 265° MAG			
HELIPORT				

ALTITUDES IN FEET
 DIMENSIONS IN METRES
 BEARINGS ARE MAGNETIC

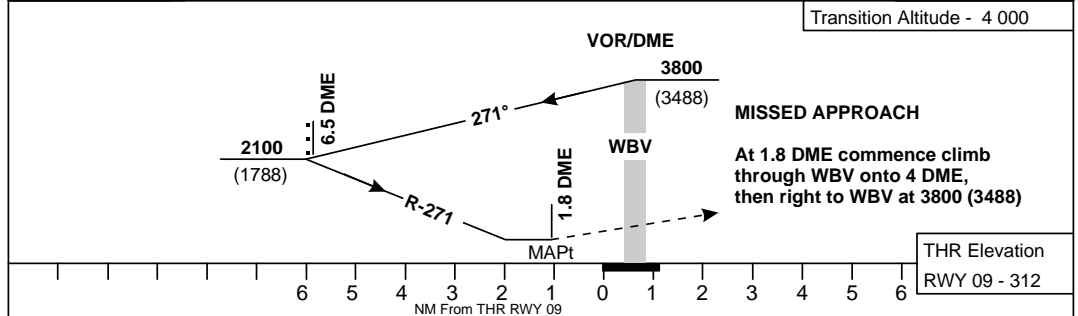
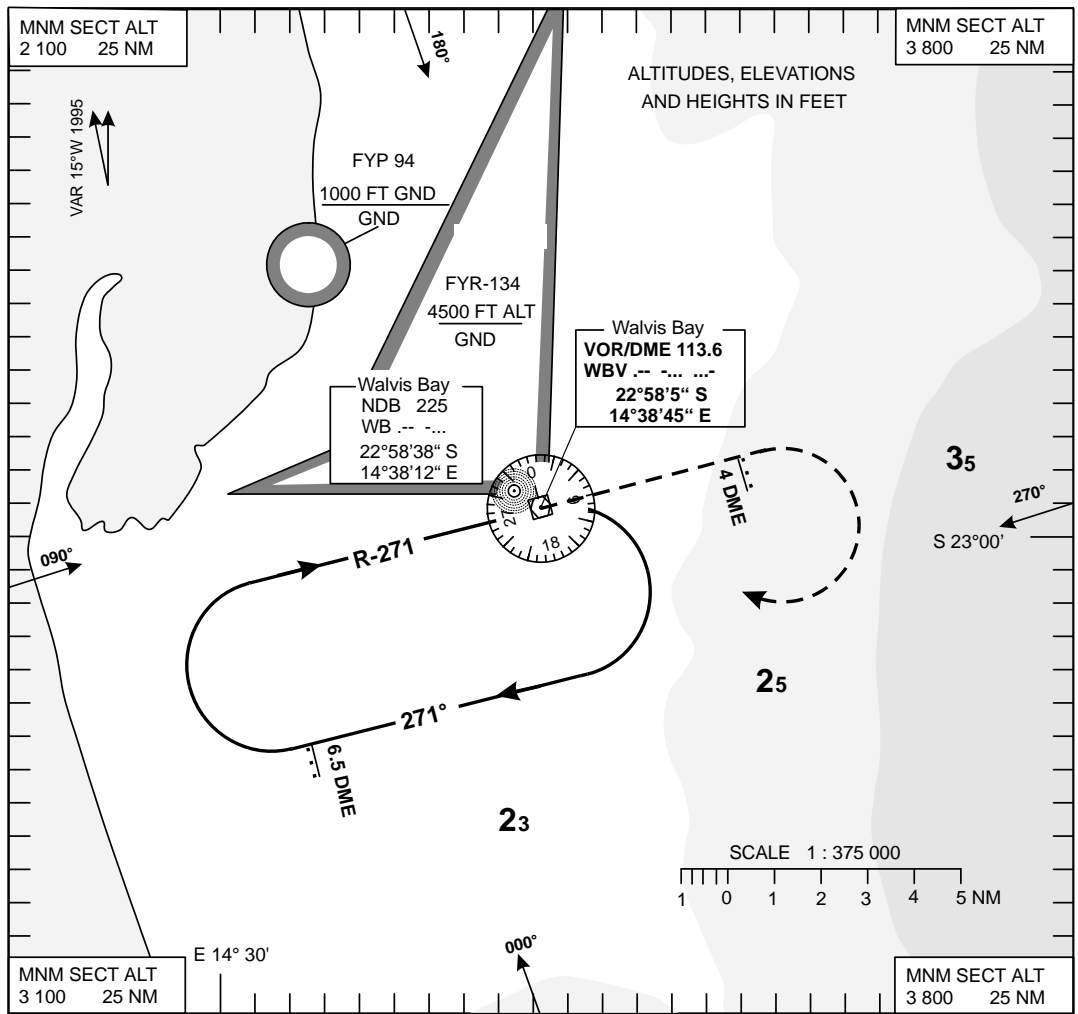
VAR 15°W 1995



LEGEND	
AP REF POINT	
VOR/DME	
NDB	

INTENTIONALLY LEFT BLANK

INSTRUMENT APPROACH CHART - ICAO **AERODROME ELEV - 312** **TWR - 122.5** **WALVIS BAY VOR / DME**
HEIGHTS RELATED TO THR RWY - 09 ELEV - 312 **ACFT CAT - A, B, C, D**



OCA(H)	A	B	C	D	1. Initial approach altitude 3800(3488) or higher MSA. 2. Procedure turn approach applicable only within 30° of the outbound heading. Use phraseology "Request procedure turn approach".		
STRAIGHT - IN APPROACH	722 (410)						
CIRCLING	At the discretion of Pilot-in-command						
6.5 DME to 1,8 DME (MAPt)							
Speed	KT	80	100	120	140	160	180
Time	min:s	3:31	2:49	2:21	2:00	1:45	1:34
RATE	ft/min	390	490	590	690	790	880

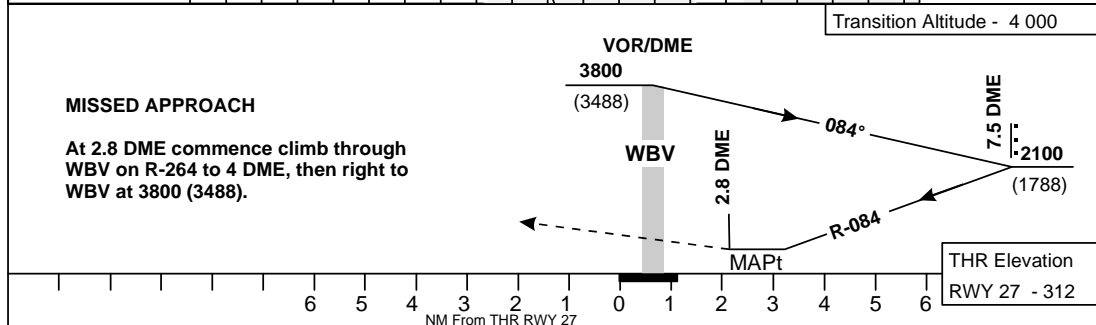
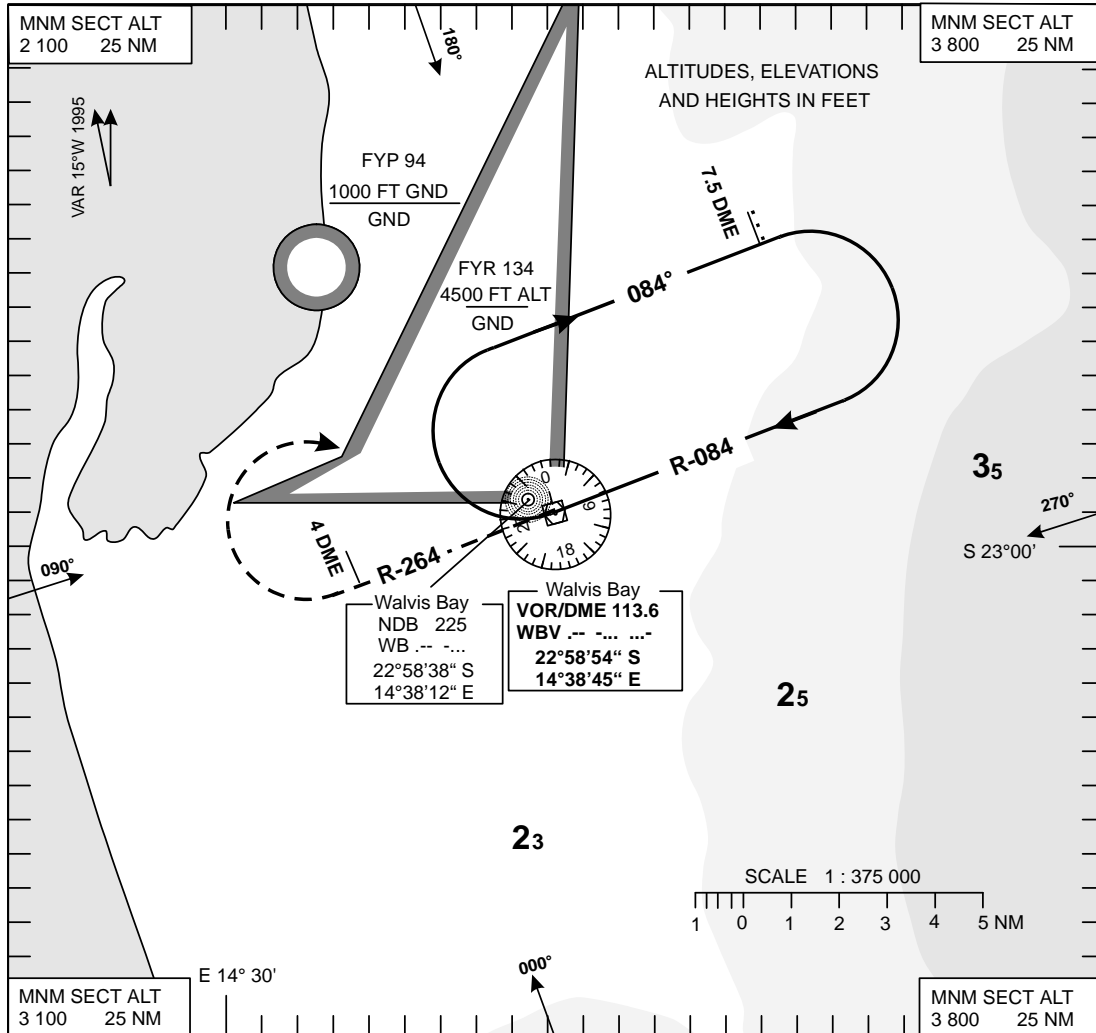
INTENTIONALLY LEFT BLANK

**INSTRUMENT
APPROACH
CHART - ICAO**

AERODROME ELEV - 312
HEIGHTS RELATED TO
THR RWY - 27 ELEV - 312

TWR - 122.5

WALVIS BAY
VOR / DME
RWY - 27
ACFT CAT - A, B, C, D



OCA(H)	A	B	C	D	1. Initial approach altitude 3800(3488) or higher MSA. 2. Procedure turn approach applicable only within 30° of the outbound heading. Use phraseology "Request procedure turn approach". 7.5 DME to 2.8 DME (MAPt)			
STRAIGHT - IN APPROACH	922 (610)							
CIRCLING	At the discretion of Pilot-in-command							
	Speed	KT	80	100	120	140	160	180
	Time	min:s	3:31	2:49	2:21	2:00	1:45	1:34
	RATE	ft/min	330	420	500	590	670	750

INTENTIONALLY LEFT BLANK